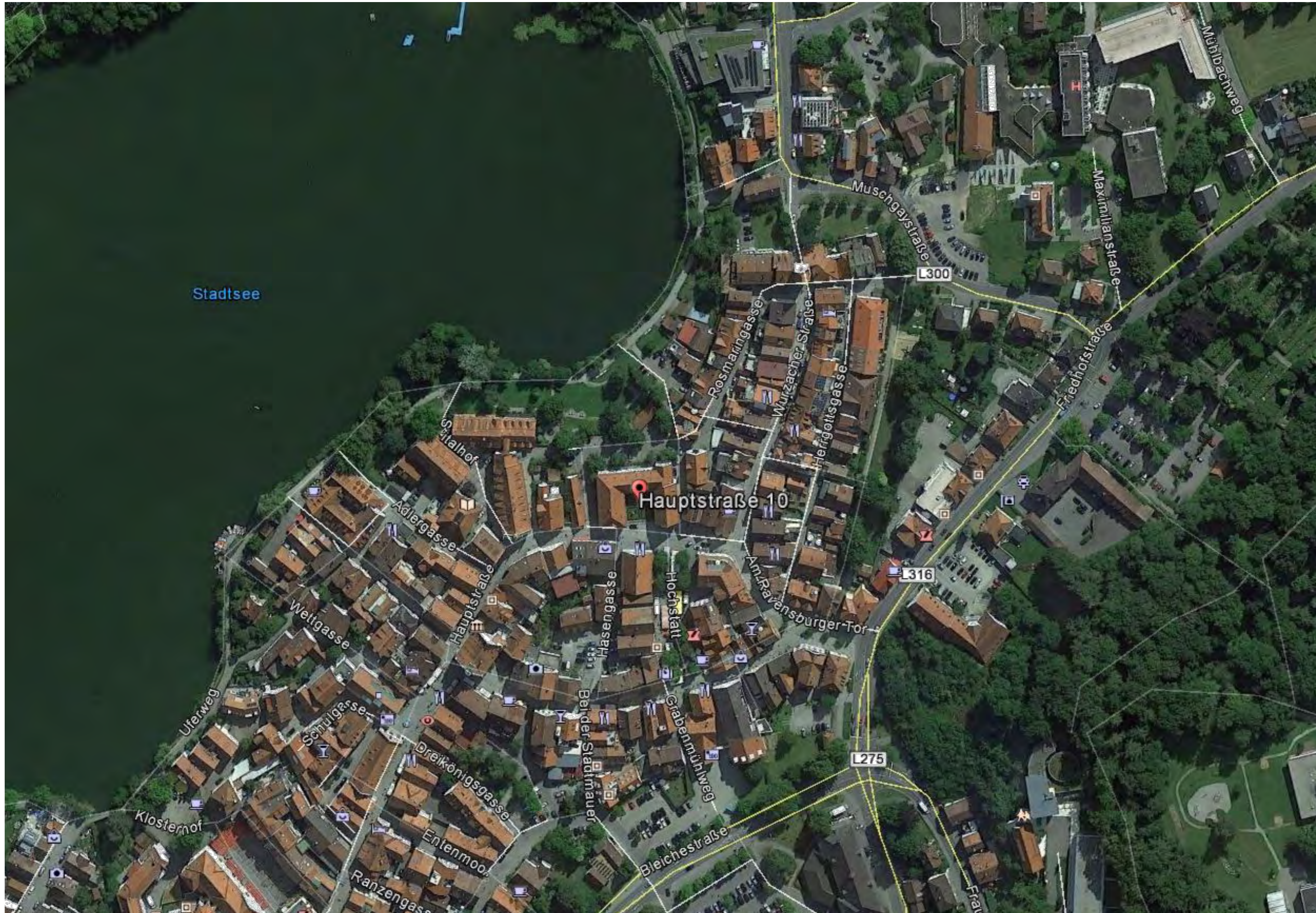




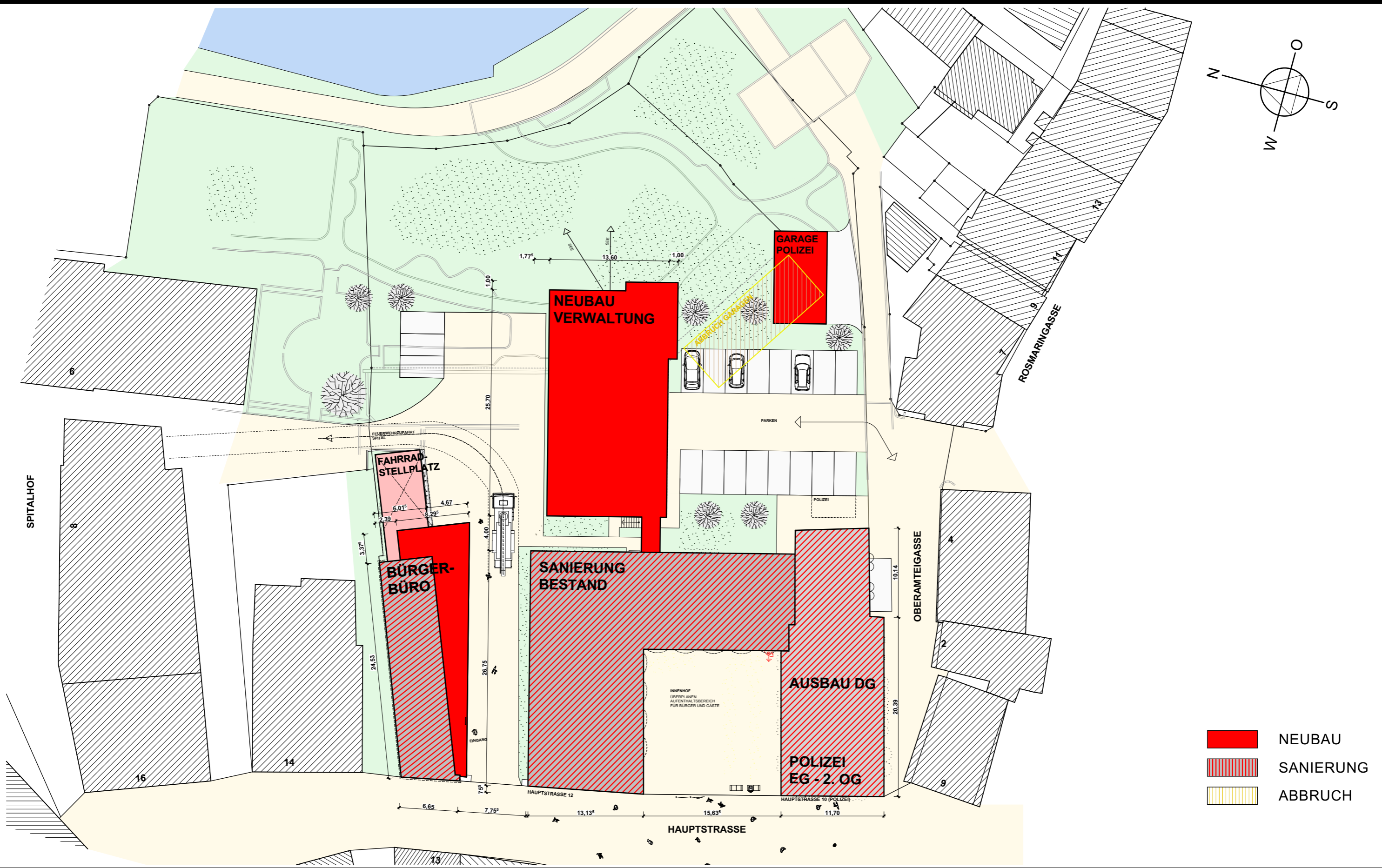
30.03.2017

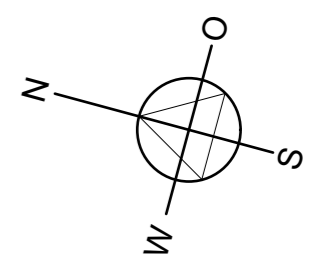
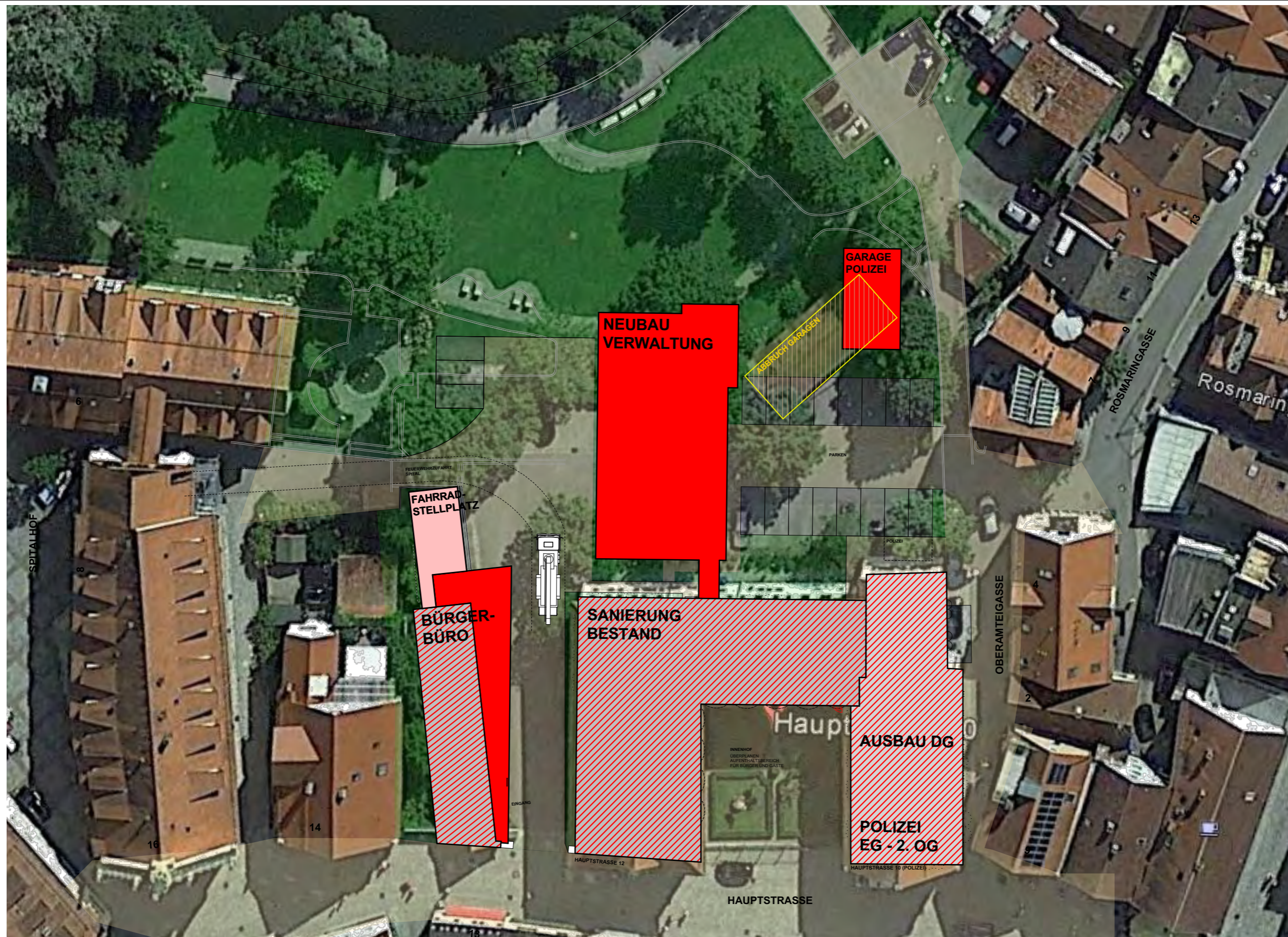







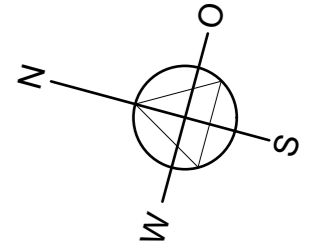








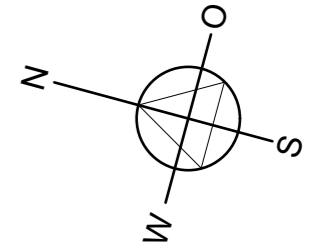
-  NEUBAU
-  SANIERUNG
-  ABBRUCH




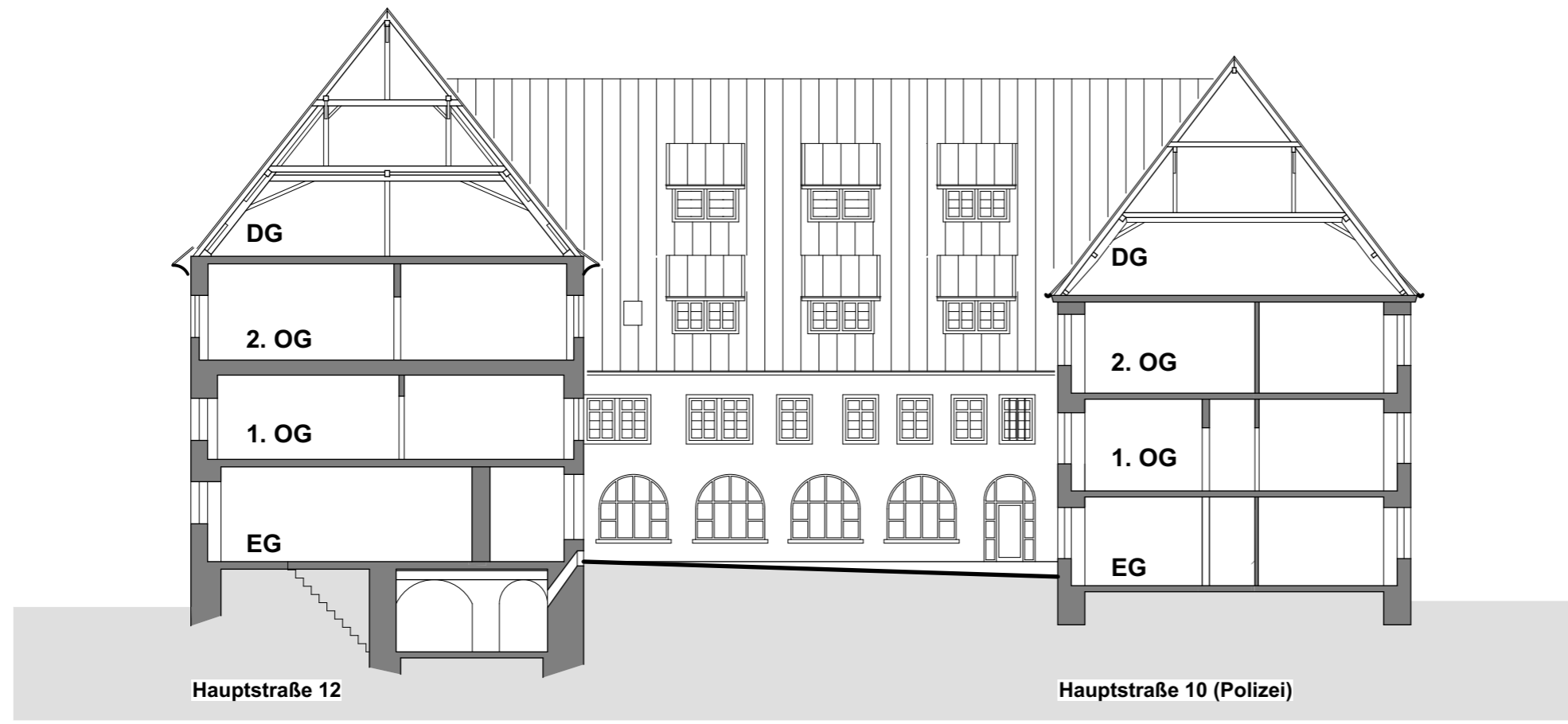




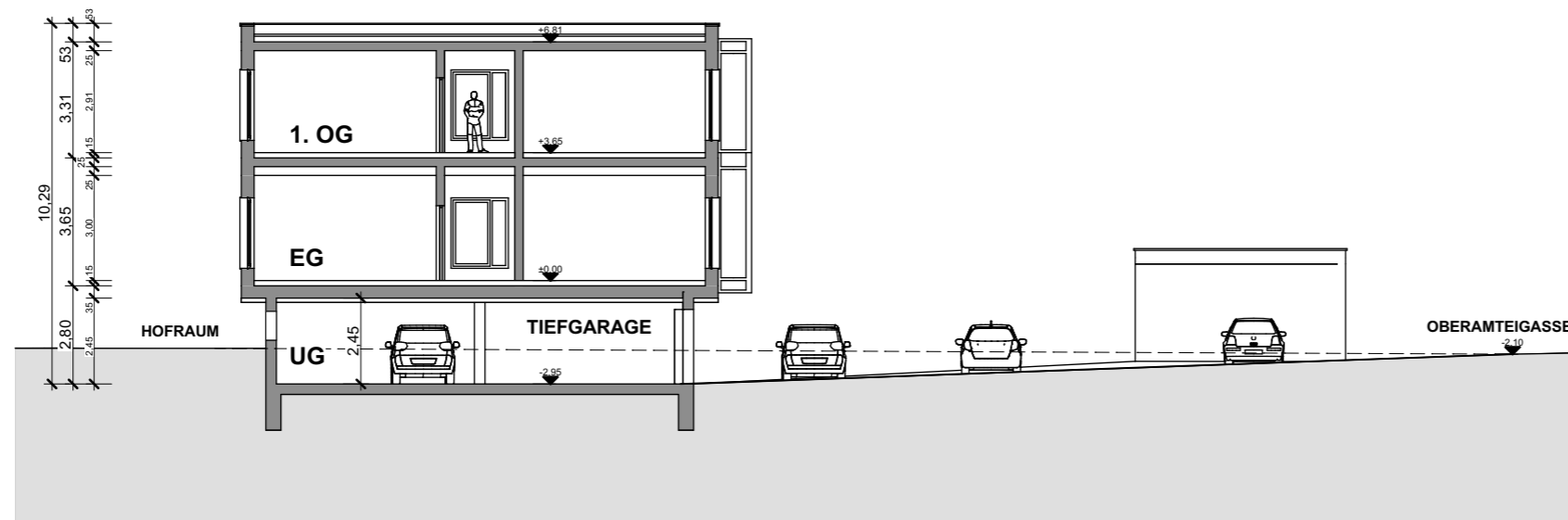




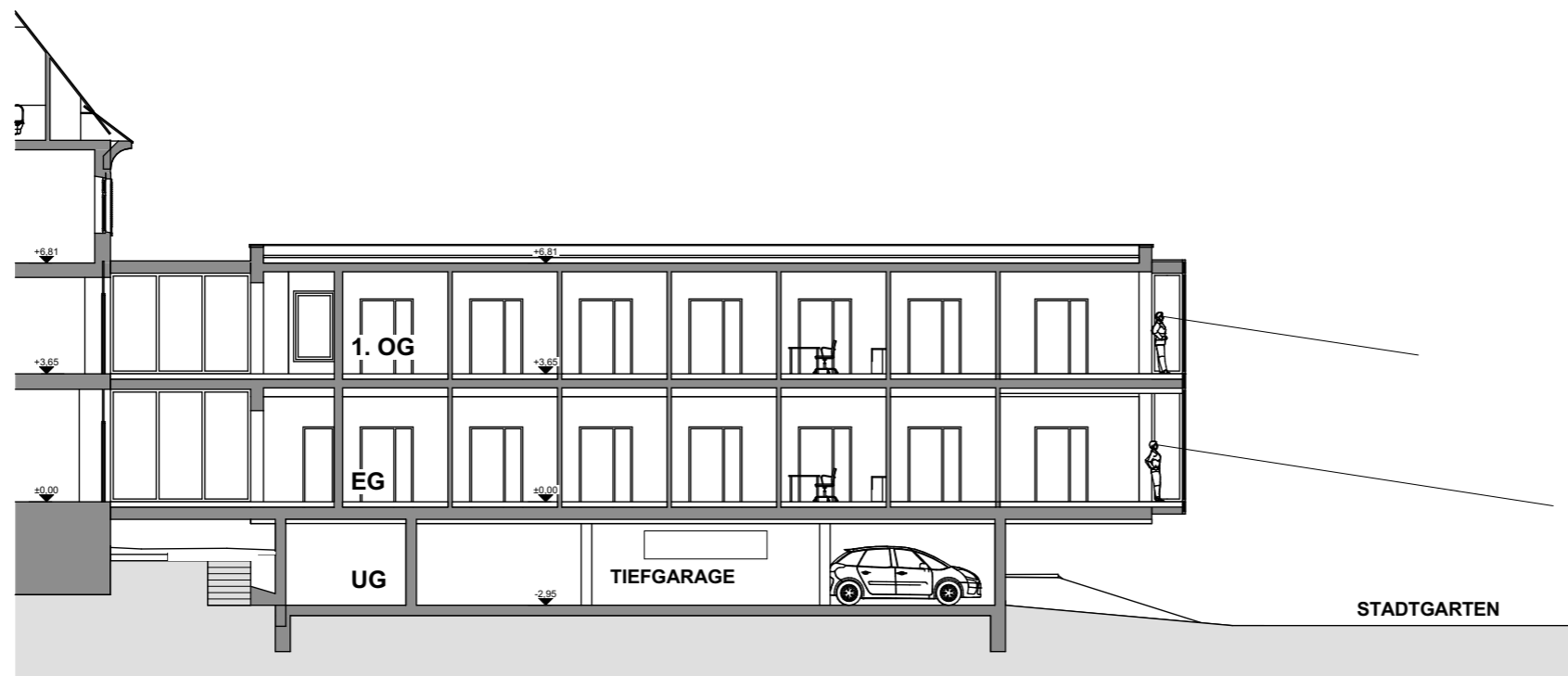
 Bürotrakt über der Polizei nicht barrierefrei erreichbar



SYSTEMSCHNITT HAUPTGEBÄUDE



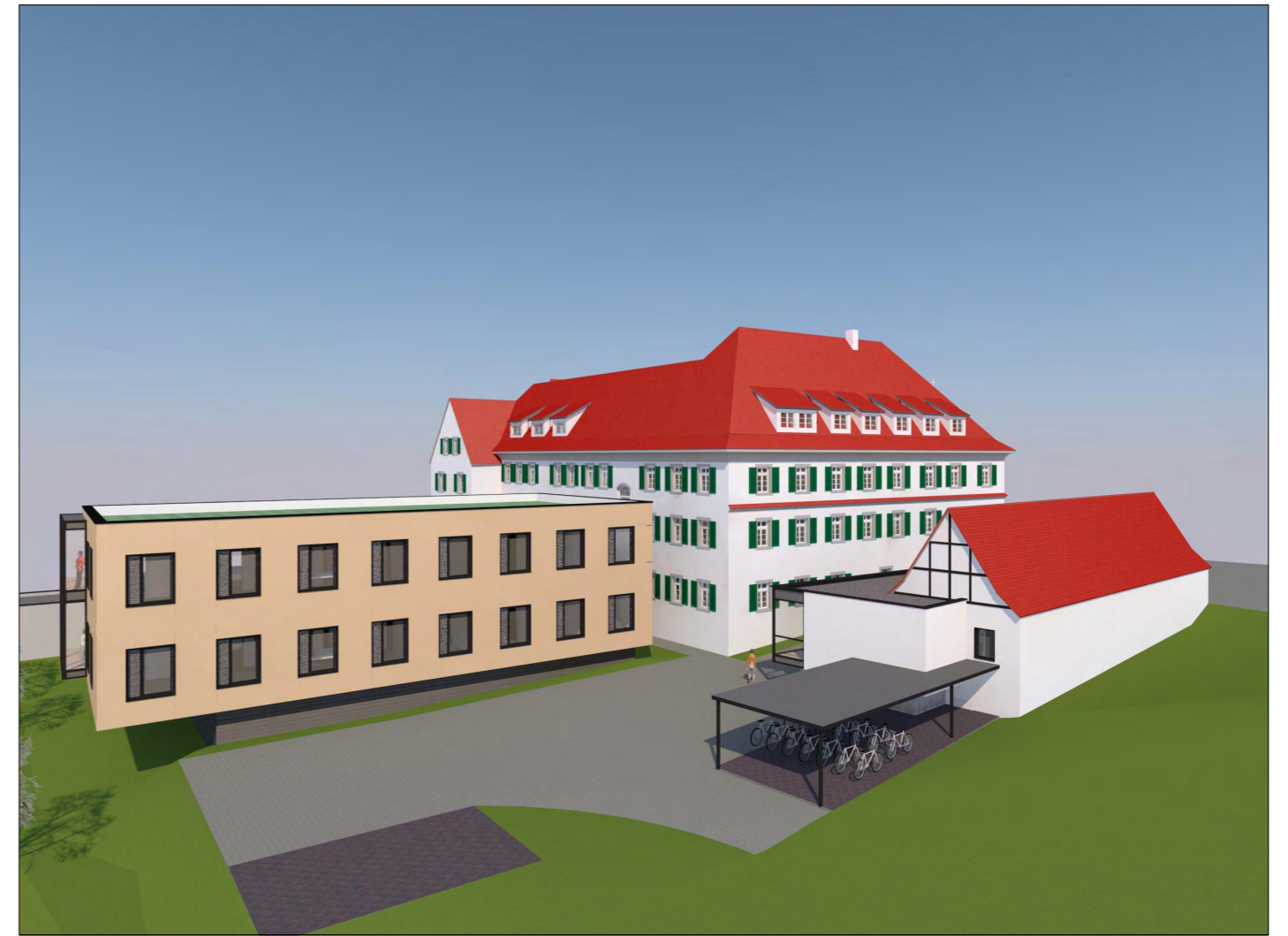
SYSTEMSCHNITT QUER

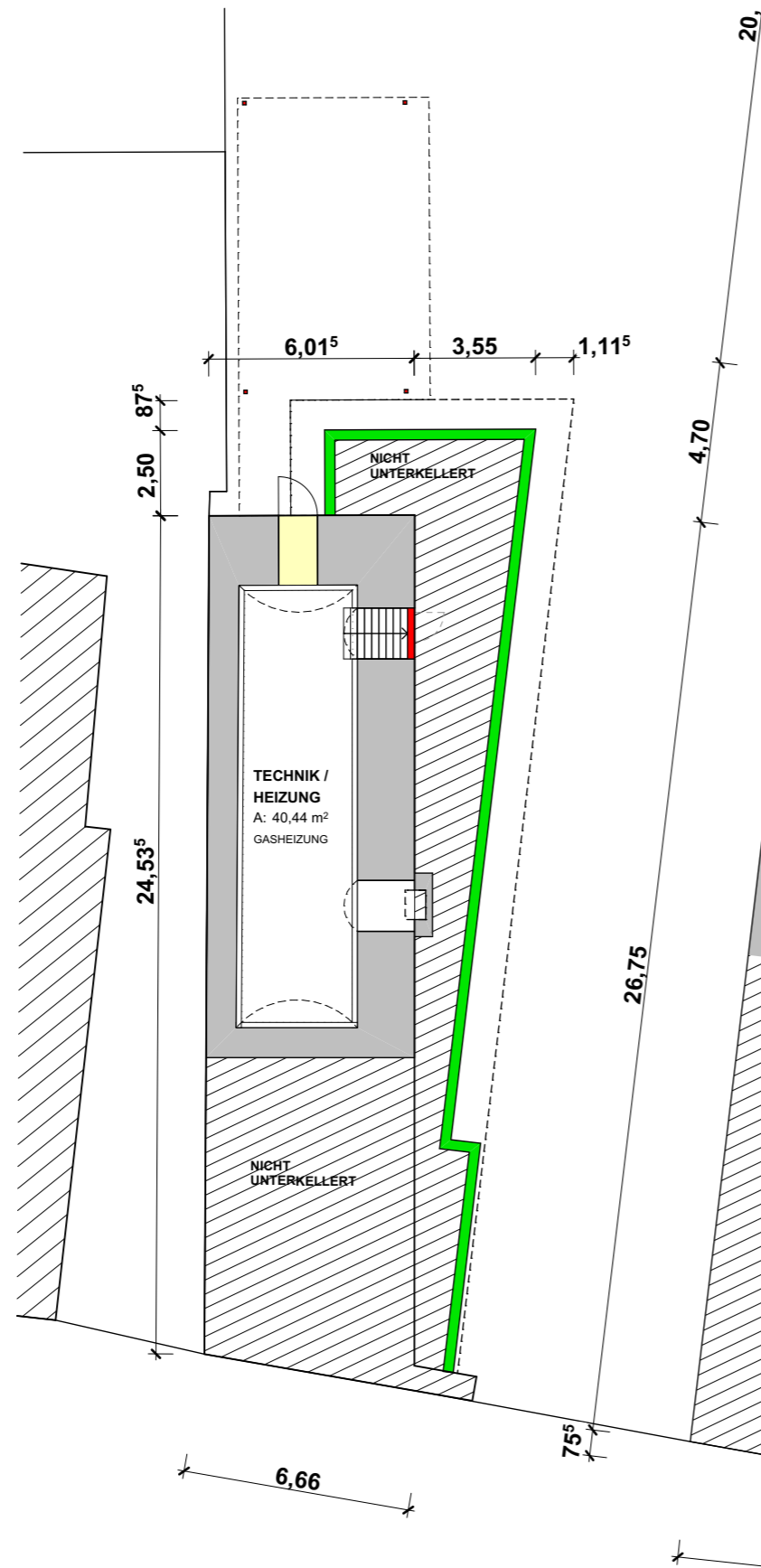


SYSTEMSCHNITT LÄNGS

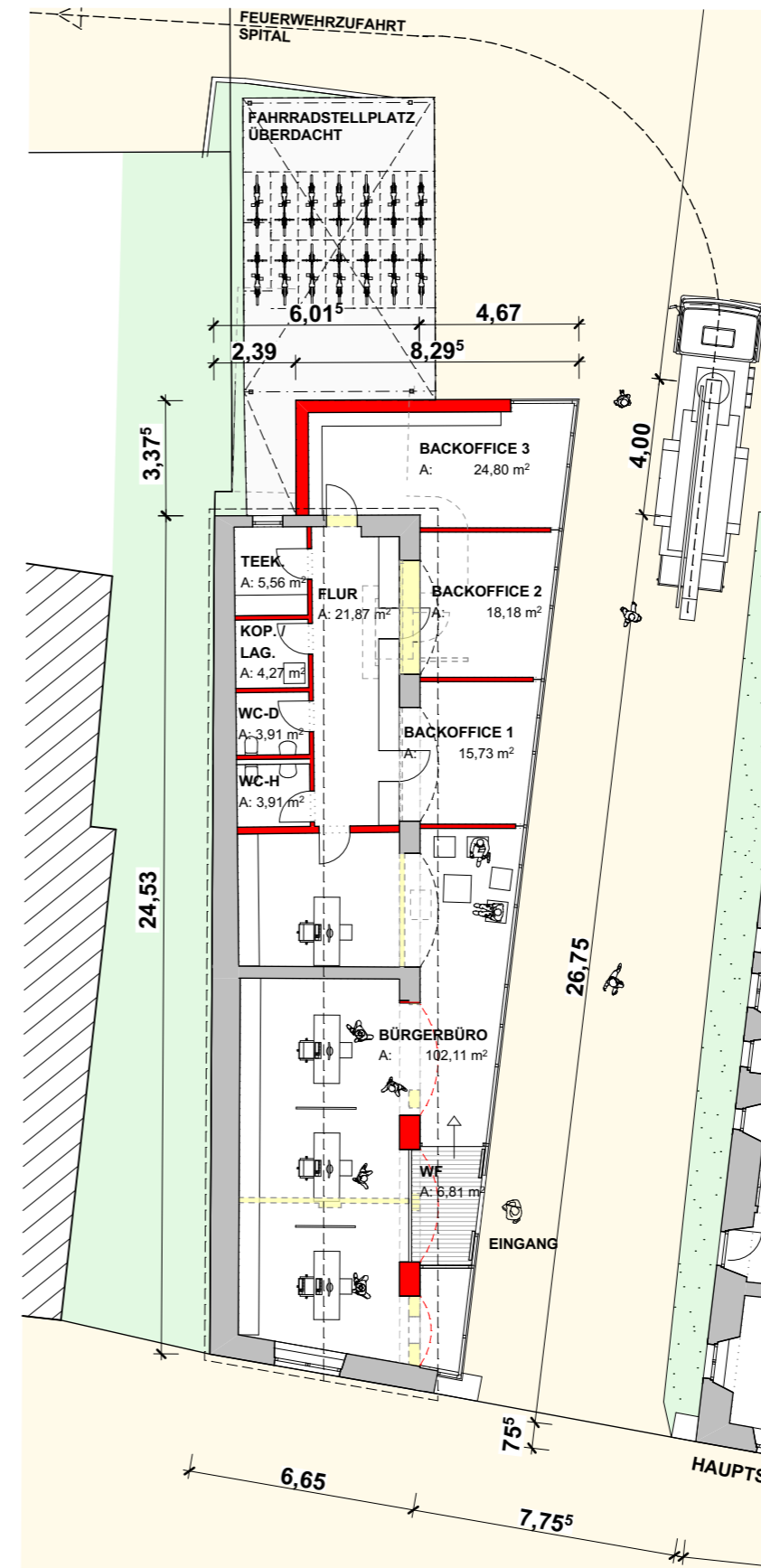




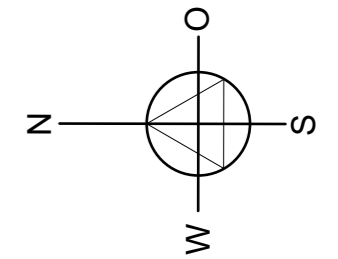


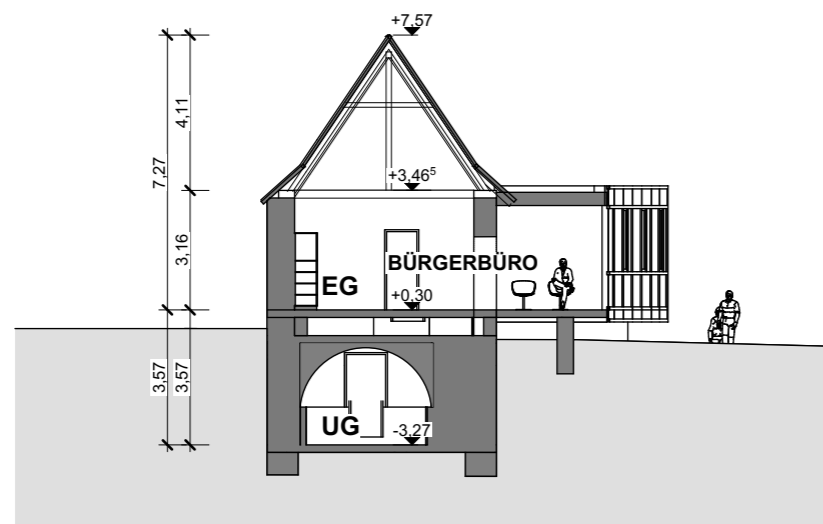


UNTERGESCHOSS

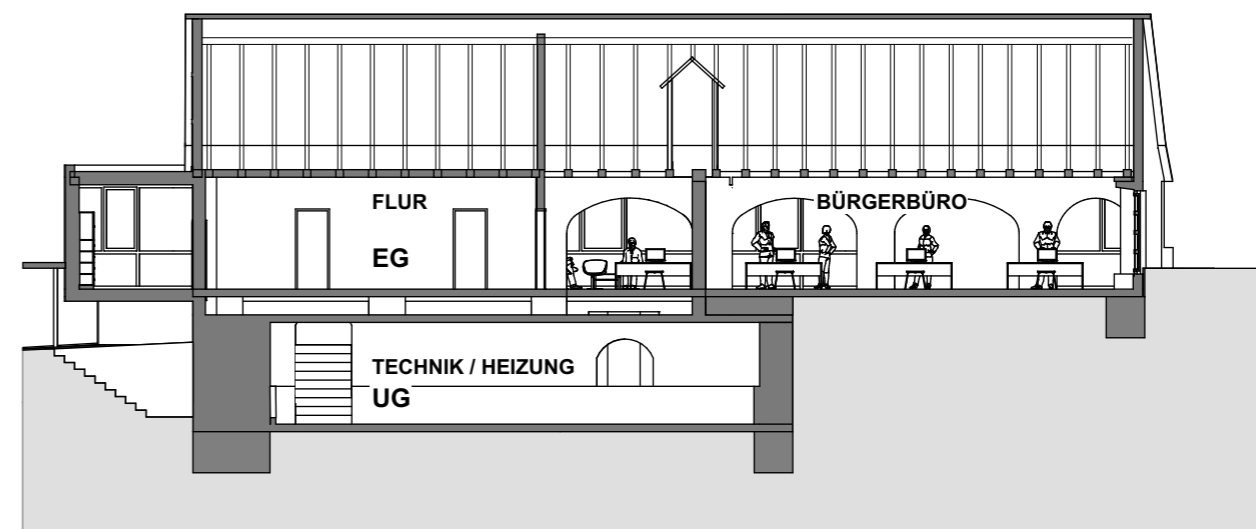


ERDGESCHOSS





SYSTEMSCHNITT QUER



SYSTEMSCHNITT LÄNGS





Aufstellung Arbeitsplätze / Büros

	Arbeitsplätze	Büros
Bürgerbüro	7	4
Neubau Verwaltung	26	26
Sanierung Bestand	53	44
Gesamt	86	74

Gesamtkostenaufstellung (Baukosten incl. Nebenkosten)

		Stand heute	Incl. Preissteigerungen gem. Index
Bürgerbüro	1.538 m ³ ca. €	1.044.352,00	1.066.492,26 (2,12%)
Neubau Verwaltung	3.571 m ³ ca. €	2.383.924,70	2.485.003,11 (4,24%)
Außenanlagen	2.500 m ² ca. €	481.000,00	511.591,60 (6,36%)
Sanierung Bestand (incl. DG Polizeiteil)	8.795 m ³ ca. €	4.620.101,04	5.109831,75 (10,6%)
Gesamtkosten incl. Mwst.	ca. €	8.529377,74	9.172.918,72

Vorraussichtlicher Zeitplan der Bauabschnitte

	ca. Beginn	ca. Ende
Bürgerbüro	September 2018	– Juni 2019
Neubau Verwaltung	September 2019	– September 2020
Außenanlagen	August 2020	– Dezember 2020
Sanierung Bestand	Oktober 2020	– Juni 2022